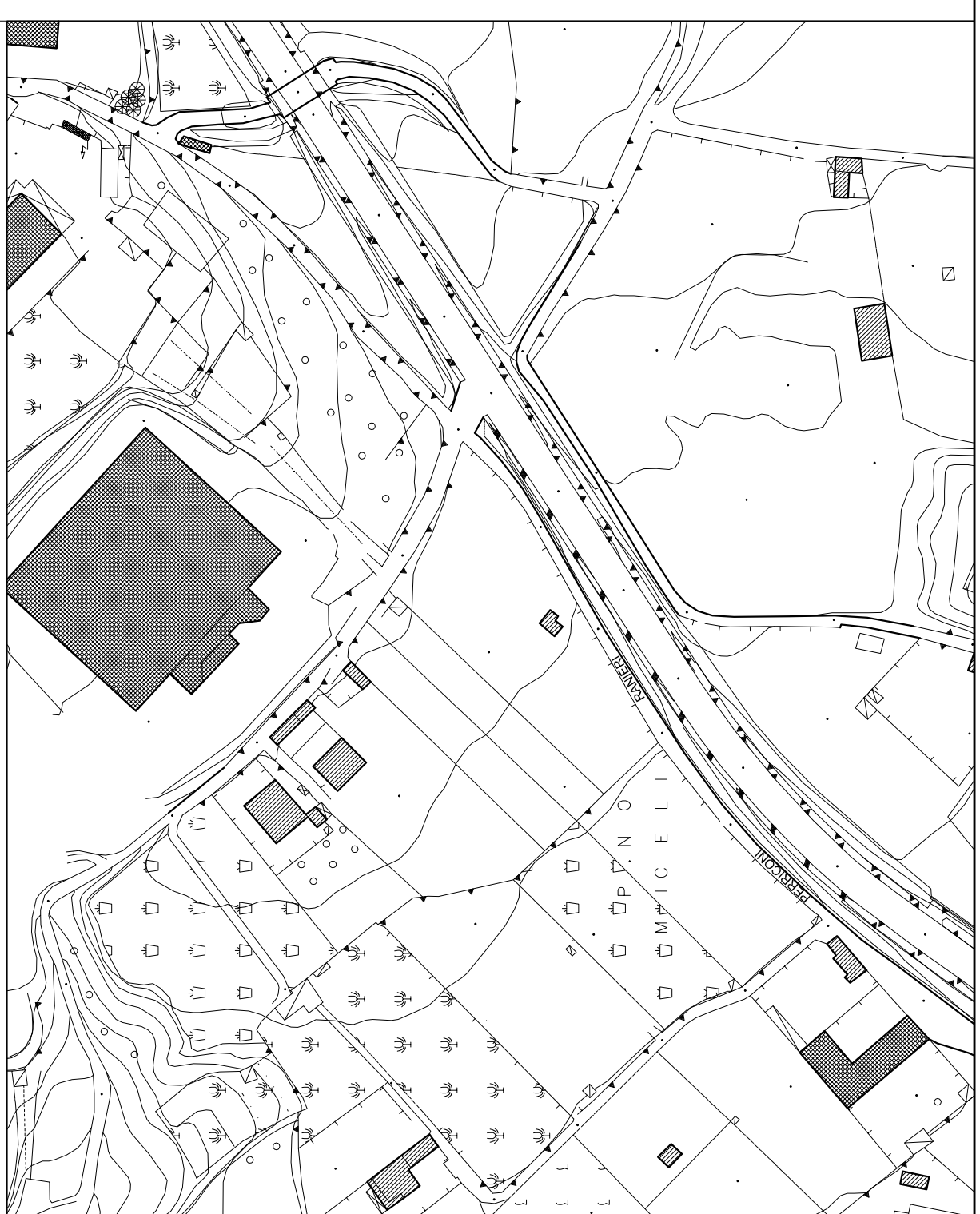


COMUNE DI REGGIO CALABRIA

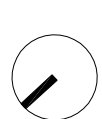
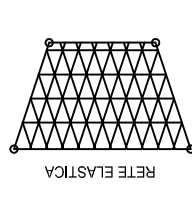
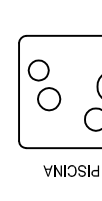
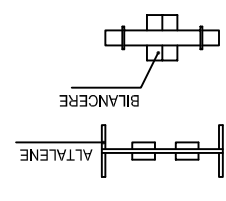
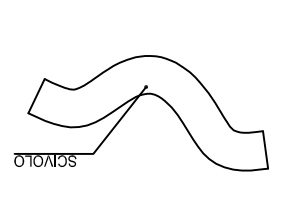
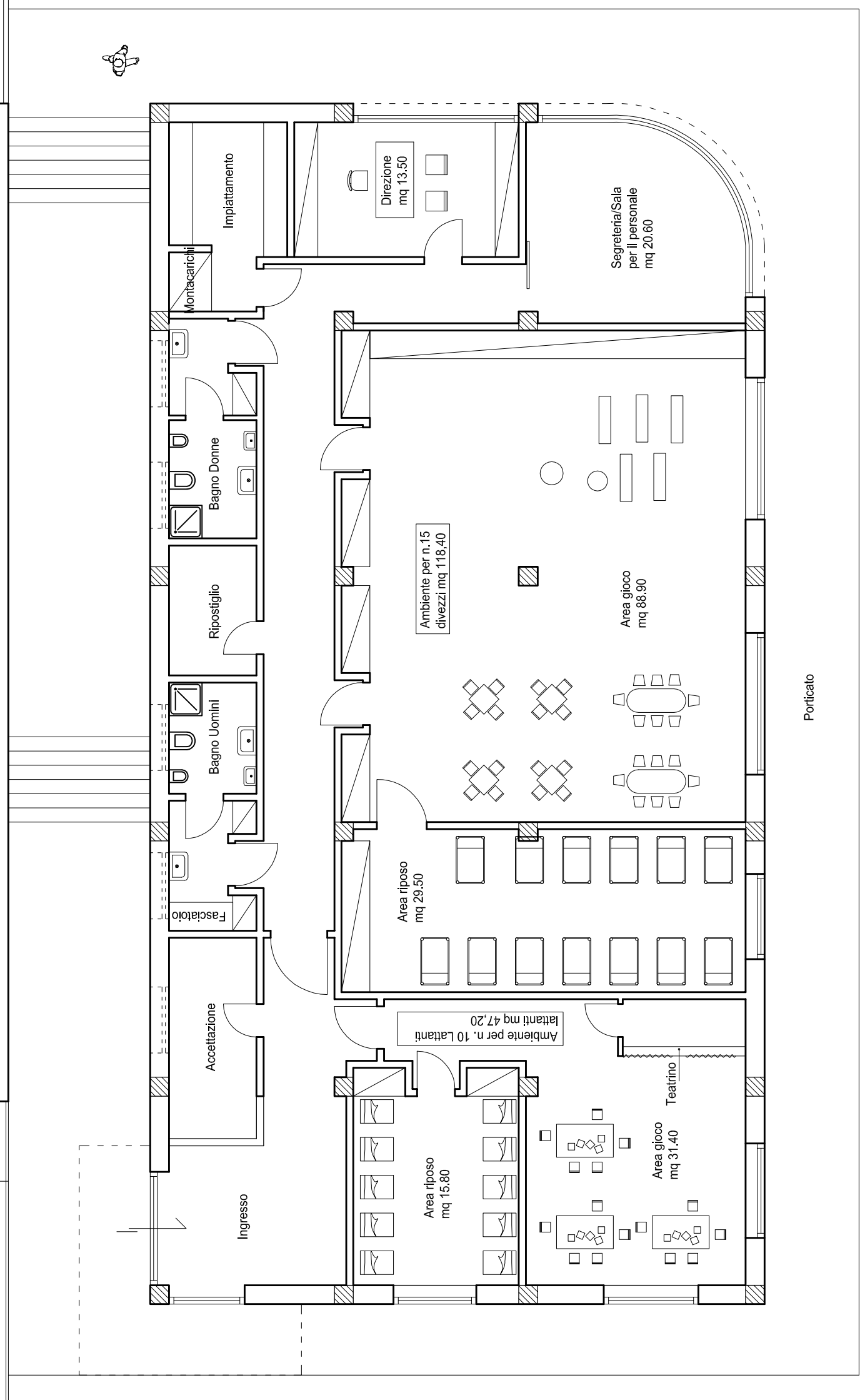
PROGETTO PER LA REALIZZAZIONE DI UN FABBRICATO AD 1 P.F.T. PIU' SEMINTERRATO, DESTIANTO AD ASILO NIDO

LOCALITA': CATONA, VIA PERRICONI - RANIERI	ELABORATI DI PROGETTO: PIANTE PT E PI-1
COMMITTENTE: UNIVERSITA' POPOLARE PACE - UNIPACE Sede Legale: Via Scacchieri, n.5 loc. Gallico - Reggio Calabria	TECNICO: Arch. Mammone Maurizio
LEGALE RAPPRESENTANTE: Sig.ra Romeo Maria Letizia	Data: 01/03/2012 Tav: 4 Scala: 1:100

AEROFOTOGRAMMETRICO Scala 1:1000



Pianta Piano Terra



Pianta Piano interrato

